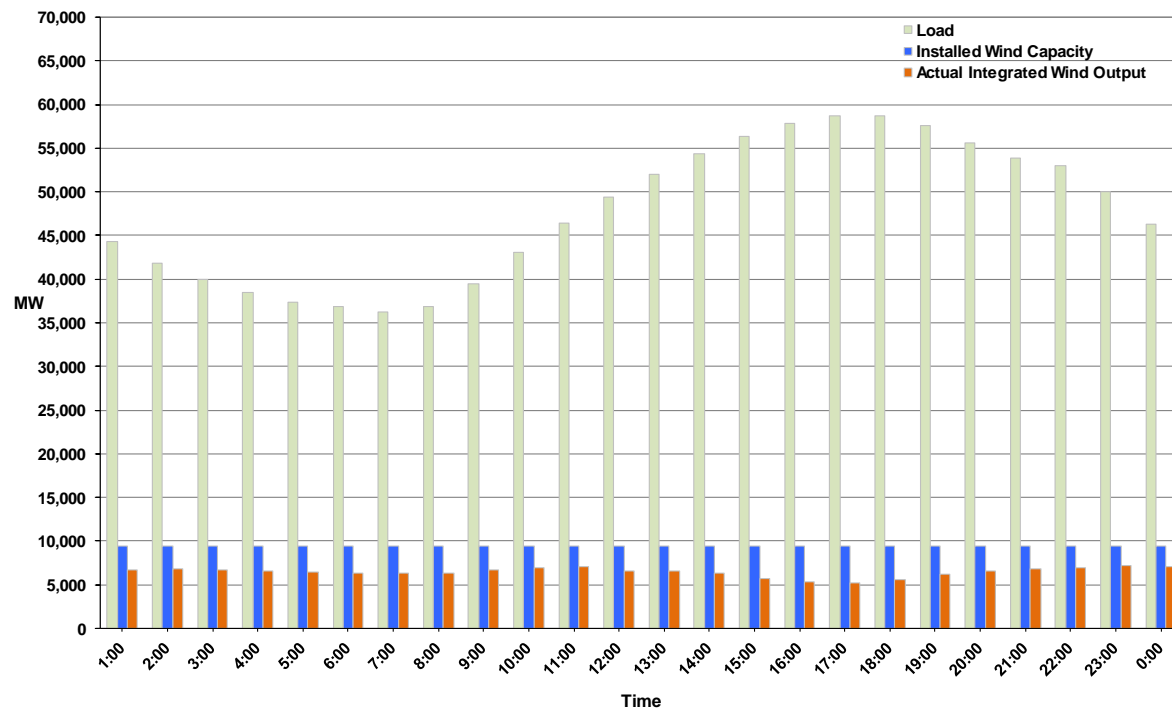




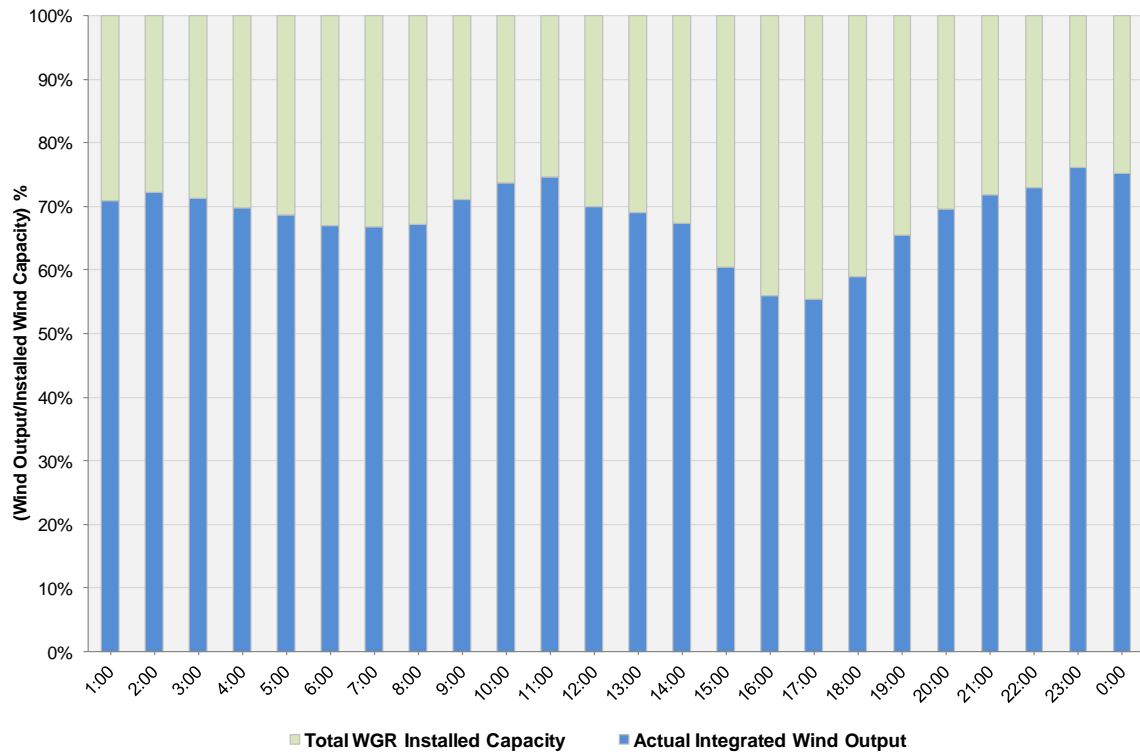
ERCOT Grid Operations Wind Integration Report: 06/19/11

Peak Load	58,753 MW
Load Peak Hour	18
Previous Wind Record 12/11/10	7,227 MW
New Wind Record	7,355 MW
Wind Peak Time	22:26:00
Wind Integration %	14.58 %

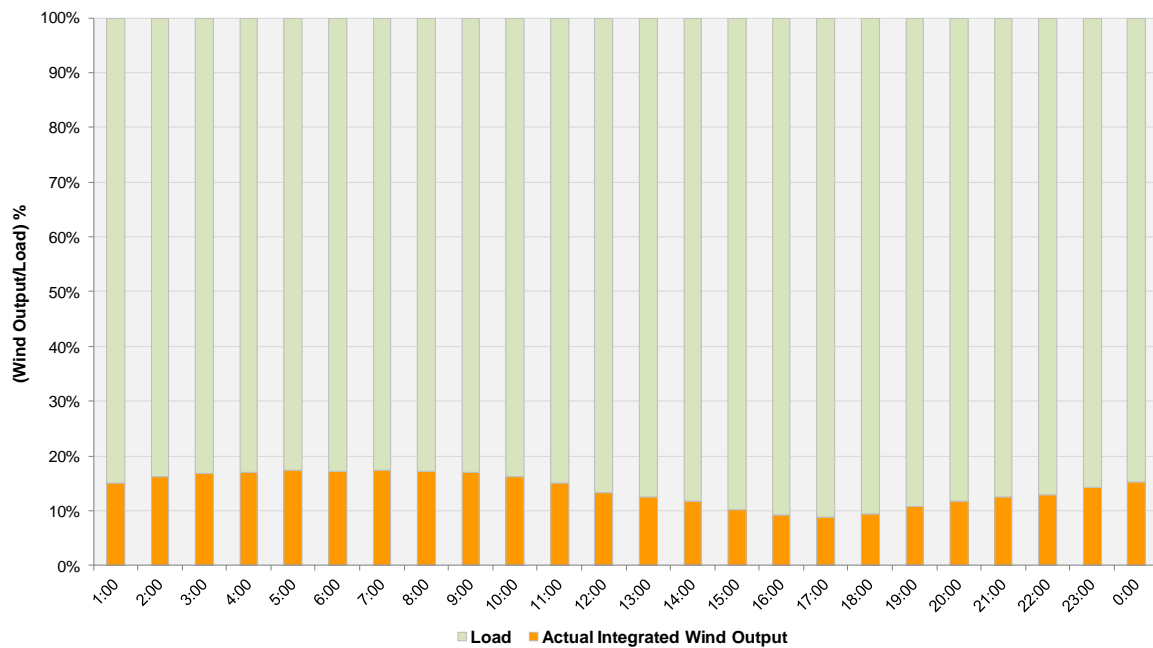
Hourly Average Actual Load vs. Actual Wind Output
06-19-2011



Actual Wind Output as a Percentage of the Total Installed Wind Capacity
06-19-2011



Actual Wind Output as a Percentage of the ERCOT Load
06-19-2011



ERCOT Load vs. Actual Wind Output 6/12/2011 - 6/19/2011

